

# RISEN SAVIOR LUTHERAN CHURCH

*A Welcoming and Worshipping Community*



## FOLLOW US:



FACEBOOK

RISENSAVIORLUTHERANCHURCH



INSTAGRAM

RISENSAVIORBROOMFIELD



WEBSITE

WWW.RSLC.ORG



YOUTUBE

RISENSAVIOR  
BROOMFIELDCO

CONTACT US:

(303)469-3521

office@rslc.org

## Third Sunday after the Epiphany

January 21st, 2024 || 8:00AM

WELCOME & MISSION STATEMENT

*(Please stand)*

OPENING HYMN 915 "Today Your Mercy Calls Us"

SHARING OF THE PEACE

INVOCATION

CONFESSION & ABSOLUTION

LORD HAVE MERCY *(Kyrie LSB 204)*

GLORY TO GOD IN THE HIGHEST *(Gloria in Excelsis LSB 204)*

PRAYER OF THE DAY

*(Please be seated)*

OLD TESTAMENT READING Jonah 3:1-5, 10

NEW TESTAMENT READING 1 Corinthians 7:29-35

*(Please stand)*

ALLELUIA AND VERSE

GOSPEL READING Mark 1:14-20

NICENE CREED

*(Please be seated)*

HYMN 833 "Listen, God Is Calling"

SERMON

OFFERING AND RECORD OF ATTENDANCE

CHANCEL CHOIR "Here I Am Lord"

*(Please stand)*

PRAYERS OF THE CHURCH

SERVICE OF HOLY COMMUNION *(LSB 208)*

HOLY, HOLY, HOLY *(Sanctus LSB 208)*

COMMUNION PRAYER

LORD'S PRAYER

WORDS OF INSTITUTION

LAMB OF GOD *(Agnus Dei LSB 210)*

*(Please be seated)*

DISTRIBUTION HYMN 611 "Chief of Sinners Though I Be"

HYMN 563 "Jesus, Thy Blood and Righteousness"

*(Please Stand)*

NUNC DIMITTIS *(LSB 211)*

POST-COMMUNION PRAYER

BENEDICTION

*(Please be seated)*

ANNOUNCEMENTS

*(Please stand)*

CLOSING HYMN 537 "Beautiful Savior"

**WE WELCOME ALL GUESTS AND VISITORS!!!**

*"We are inspired by the Word of God to be a welcoming and worshipping community, equipping people to live out and share their faith in love."*

## This week @ RSLC

### SUNDAY January 21st

8:00am || Traditional Worship Service

9:15am || Bible Study (All Ages)

10:30am || Contemporary Worship Service

11:45am || Youth Band

### TUESDAY January 23rd

5:30pm || Youth Handbells

### WEDNESDAY January 24th

7:00pm-9:00pm || Chancel Choir

### THURSDAY January 25th

9:00am-11:00am || Women's Bible Study

9:30am-11:00am || Men's Bible Study

6:00pm-8:00pm || Praise Team Rehearsal

### FRIDAY January 26th

10:00am-11:30am || Mustard Seed Connect

1:00pm-3:00pm || Mahjong Group

### SATURDAY January 27th

Orr Baptism

## Next week @ RSLC

### SUNDAY January 28th

8:00am || Traditional Worship Service

9:15am || Bible Study (All Ages)

10:30am || Contemporary Worship Service

12:00am || Voters Meeting

### MONDAY January 29th

4:00pm-5:00pm || VanZago Connect Group

### TUESDAY January 30th

5:30pm || Youth Handbells

### WEDNESDAY January 31st

7:00pm-9:00pm || Chancel Choir

### THURSDAY February 1st

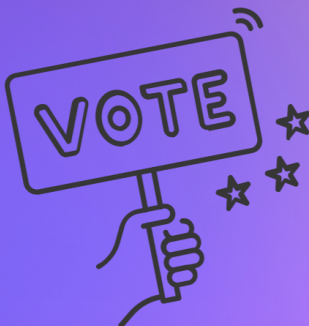
9:00am-11:00am || Women's Bible Study

9:30am-11:00am || Men's Bible Study

6:00pm-8:00pm || Praise Team Rehearsal

### FRIDAY February 2nd

10:00am-11:30am || Mustard Seed Connect



**VOTERS MEETING**  
Sunday, January 28th  
@ Noon

# NEWS & EVENTS

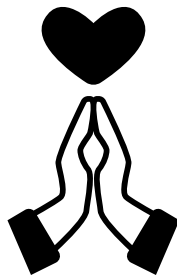
---

## CONSTITUTION AND BYLAWS REVIEW

After thoroughly reviewing the revised Constitution and Bylaws, both the Board of Directors and the Board of Elders in joint session have endorsed them and will bring them to you for approval on January 28th at a specially called Voters Assembly meeting. At that meeting, you should expect the GO (Governance and Organization) Team to highlight the most significant changes and answer any questions. If approved by the congregation, they then go to the District's Constitution Committee for review, and if approved there, they go to the District's Board of Directors for final approval, at which point they will officially go into force. Please review these documents, hard copies can be found at the ushers table, and join us for a vote on January 28th!

## GO TEAM MEMBERS

Pastor Mark Koch  
Duane Dohrer  
Patty Jones  
Rosemary Lind  
Glenn Steinbrenner  
Vince VanZago



*Thank you*

## RECYCLING SAINTS

Risen Savior is looking for volunteers to take out the recycling once a week. This can be done on your own time, or as a family service project. We have been using the Broomfield Recycling Center located at 225 Commerce Street, Broomfield for RSLC recycling needs. Please contact **Colten Highley** if you are interested.

## MISSION OF THE MONTH- MY CHOICE RESOURCE CENTER

January is National Sanctity of Human Life Month.

My Choice Resource Center is honored to partner with many of you who support & help share the good news that we are here helping bring HOPE & Support to women, men, teens and families, in our communities, with our free compassionate care. Look for more information at the table display in the hallway. A list of current needs is available, and items can be brought to church and left in the basket labeled in the hallway. Grab a baby bottle on January 28th to help support the Center in their Baby Bottle Drive.



# NEWS & EVENTS

---



## **LENTEN COLLEGE BOXES || We Need Names & Addresses**

Women in Mission will be packing boxes for our college students on Tuesday, February 20th. Students can be family or friends, living at home or away. Please send addresses by email to the church office, [office@rslc.org](mailto:office@rslc.org) or drop them off at the LWML table in the main hallway by Sunday, February 18th.



## **WEDNESDAY MORNING WOMEN'S BIBLE STUDY**

Wednesday Women's Bible will meet January 5 – March 20 studying Second Corinthians. The class meets 9:30 – 11:00 am in the choir room. You are invited to join.



## **SOAR SPRING SEMINAR**

SOAR committee announces their next semiannual event Saturday, February 10 at Bethlehem Lutheran Church, 2100 Wadsworth Blvd, Lakewood, CO 80214. Registration and continental breakfast begin at 8:45 A. M. Lt. Col. (ret) Joseph Murphy, CO National Guard Chaplain will be our keynote speaker. Other speakers and musical group, 4Given will be part of our program which ends at 3:45 with a closing devotion.. Lunch is provided with your registration. Contact information: Greg Prosser at [gmail357@comcast.net](mailto:gmail357@comcast.net) or 303-775-0567; or Owen Frey at [odfrey3291@gmail.com](mailto:odfrey3291@gmail.com) 303-241-4654.



## **F.I.S.H.- Fellowship In Serving Humanity**

Your generosity through church provides for family needs through this local food bank. Donations can be dropped off in the FISH baskets in the hallway at church. Suggested donations for the upcoming months:

- January: Breakfast cereal, snack items, cooking oil
- February: soup, crackers, lunch items
- March: Hamburger/Tuna Helper, Ramen, personal care items

Any and all other non-perishable good donations are also welcome and appreciated! For additional information, please contact Al Lonon through the [church office](#).

---

*"Each one must give as he has decided in his heart, not reluctantly or under compulsion, for God loves a cheerful giver." (2 Corinthians 9:7)*

## **WAYS TO GIVE:**

- Cash or check: offering taken during service
- **Realm:** set up giving through your Member login
- Text Giving: text our church's keyword "LOVE2GIVE2RSLC" TO 73256
- More giving options available at [www.rslc.org](http://www.rslc.org)



**THANK YOU FOR YOUR CONTRIBUTIONS**