



# RISEN SAVIOR *Lutheran Church*

3031 W 144th Avenue • Broomfield, CO 80023 • (303)469-3521 • [www.rslc.org](http://www.rslc.org)

Newsletters, Worship Services, Bible Studies and more available on the church website @ [www.rslc.org](http://www.rslc.org)

## Sunday, January 31, 2021

**Sermon Series Fact or Friction:  
Finding HOPE in Challenging Times  
Week 2: Friction In Our Marriages**  
Scripture: Colossians 3:12-17

Marriages can be one of the first relationships that begin to experience friction when times get hard. The fact is that healthy couples don't fall in love, they commit into love. Let's face it, treating your spouse with compassion, kindness, humility, gentleness, and patience does not happen by accident. These attitudes must be put on, like putting on a coat. When couples learn to love each other in this kind of way then Jesus Christ is made evident to people around them.



## CROSSTRAINING Mission Project

### JANUARY SHOE COLLECTION

THIS IS THE LAST SUNDAY FOR SHOE COLLECTION!

Shoes that are new or in good condition!  
Collection Box by Children's Kiosk.



### Updates to Risen Savior's Curb Appeal

I am happy to report that we have completed 2 projects that improve Risen Savior's exterior appearance.

2 large evergreen trees that blocked our view of the front of the church were removed. The view now from 144<sup>th</sup> shows the cross embedded in the brickwork and our large open front porch and entryway.

This makes the front of Risen Savior much more inviting and visible from the road.

The "Trim Lights" which accent the roof line and are controllable with a spectrum of colors and visual "effects" have been installed. These lights have a variety of patterns and pulsing effects. We will use these going forward in a variety of ways for different occasions.

NEXT - Our new electronic LED signage on 144<sup>th</sup> is ordered and will be installed as soon as possible.

Certainly prior to Easter. [Ed Sweetwood, Director of Administration](#)



## NEW DIGITAL RESOURCES for CrossTraining Sunday School!!

We are beginning a new unit, and it has additional digital resources to use for Sunday School at home (and to supplement our in-person Sunday School). [Click here](#) for details on the website connections/children/crosstraining

### Reserve Your Campsite August 13-15

Campground: Mountain Park,  
Cache La Poudre River, CO.

Sites 1-24 have electricity.

Campground right on the river.

Reservations open February 13

Go to website @ [www.recreation.gov](http://www.recreation.gov)



If you would like to be added to RSLC Camping Group email distribution, contact Bill Stegen through the [Church Office](#).

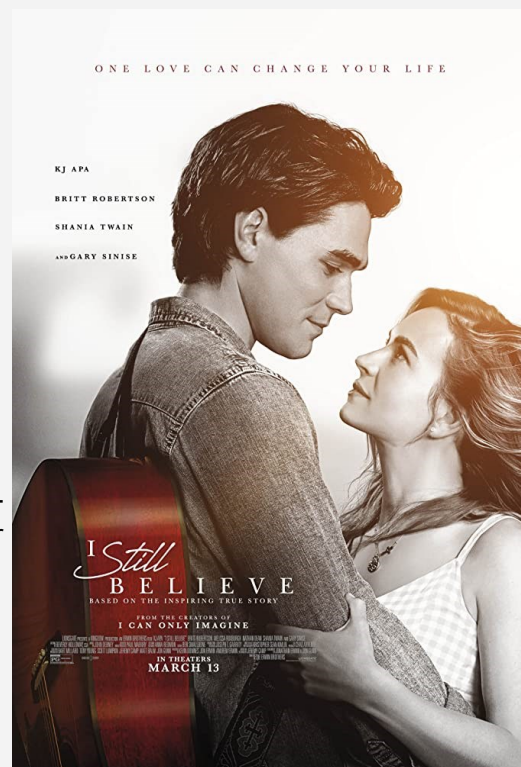
## Drive In Movie Night Students and Adults Saturday, February 20, 6:30 p.m. "I Still Believe"

An inspirational story of love and faith for Student and Adult Audiences. From the makers of I CAN ONLY IMAGINE comes the true life story of Christian music mega star Jeremy Camp and his remarkable journey of love and loss that proves there is also hope in midst of tragedy and faith tested is the only faith worth sharing.

Come together, safely in our cars in the West Parking Lot to enjoy a drive-in movie! To be safe we will follow these COVID precautions: Stay in your car/trunk, Use your car's radio or bring portable FM radio tune to 89.1 FM. A small devotion and a small snack will be handed out. Please bring your own snacks/blankets/etc. and mask, just in case you need to enter the crowd or building.

Pick up an invitation in the Fellowship Center invite someone.

This Fun Event is brought too you by Student & Children's Ministries.



YOU CAN HELP



### FOOD COLLECTION

Bring in non-perishable foods and personal care items to share with the needy throughout Broomfield.

FISH Collection Baskets are located under the SERVICE table and by the east door.

Questions? Contact Al Lonon through the [church office](#).

## Thank you for your faithful financial commitment to Risen Savior Lutheran Church.

A new optional giving choice has been added to online giving. As you enter your online donation, you will be given the choice to help offset the processing fees for that donation. This option will only be added if you put a check mark by that choice; the cost will then be included as part of your charitable donation.

Your contributions are truly appreciated and are helping to sustain the mission and ministry of our congregation

Please contact [Lynda Kluth, Finance Manager](#), in the [church office](#) with questions.



If I have never been married or have no children as direct heirs, am I required to give a family portion of my estate to siblings, nieces, and nephews, etc.? Once again, the gifts out of your estate are not required, but are expressions of God's grace. If you want to bless those family members, give them gifts, but do not be compelled by guilt. You will want to think through this in preparation for working with your attorney. Your Risen Savior Gift Planning Counselor can help. Contact Jason Jones at [Jason.Jones@lfnf.org](mailto:Jason.Jones@lfnf.org) or call him directly at (970) 988-0305.

### Sunday Worship

Space is limited please save a seat for Services

[Click here to Sign up for Services, Nursery, and Sunday School.](#)

Save a Seat online: go to [www.rslc.org](http://www.rslc.org) scroll down to Events | Indoor Worship.

Masks must be worn.

### Sunday Schedule

- ⇒ **8:00 am Indoor Worship Service**
- ⇒ **9:00 am Adult Bible Study**
- ⇒ **9:30 am Indoor Worship Service**
- ⇒ **9:30 am Nursery**
- ⇒ **9:30 am Sunday School K-12**
- ⇒ **10:45 am Adult Bible Study**
- ⇒ **Online Worship Services**  
At your convenience, go to the church website @ [www.rslc.org](http://www.rslc.org) to enjoy Online Worship Services
- ⇒ **Communion**  
Available the first and third Sundays
- ⇒ **Home Communion Available**  
Contact an Elder through the church website @ [www.rslc.org](http://www.rslc.org)

### Automatic Giving Option (weekly/semi-monthly/monthly)

**"Joyful Response"** Set up electronic contributions to church through Joyful Response.

This program's highlights:

- \* You choose the amount and frequency
- \* Changes to donation may be made at any time by contacting the church office
- \* No fees to you or the church

- ⇒ Giving Online: (click "Giving" button) [Credit/Debit Card](#) at [www.RSLC.org](http://www.RSLC.org)
- ⇒ Realm: through Member Log In, set up giving
- ⇒ Your bank's pay service: have checks automatically sent to Risen Savior
- ⇒ Text Giving: text our church's keyword "LOVE2GIVE2RSLC" to 73256
- ⇒ QR code can be scanned by any smartphone camera and will take you immediately to the Realm Giving screen to complete your giving.



Forms [online](#) or the Information Center  
Please attach a voided check or savings deposit slip.

**If you have questions or need help with setup, contact [Lynda Kluth, Finance Manager.](#)**

### Thrivent Choice

Thrivent Choice program lets Thrivent members recommend where Thrivent Financial distributes some charitable outreach funds. Thank you to all past participants in this program for directing your Choice Dollars to our church; we received \$6,500 in 2020. Eligible Thrivent benefit members are designated a certain number of Thrivent Choice Dollars, based on their insurance premiums, contract values and Thrivent Financial volunteer leadership. Members eligible to participate in Thrivent Choice Dollars receive a letter in the mail or an email.

To see if you have Choice Dollars available to direct: Log in to your Thrivent account: [Thrivent.com/thriventchoice](http://Thrivent.com/thriventchoice) Or Call 800-847-4836 and say "Thrivent Choice" after prompt





We encourage new people to participate in church and through Zoom.  
We take excellent care of the facility with cleaning, masking, and distancing. More information about Bible Studies and logins for Zoom meetings are on the Risen Savior website

[www.rslc.org/resource-center/](http://www.rslc.org/resource-center/)

Sign up for all in person Sunday morning activities here <https://www.signupgenius.com/go/10C0B44AAAA2CA4FD0-sunday>



RISEN SAVIOR  
Children's Ministries



RISEN SAVIOR  
Student & Family Ministry



RISEN SAVIOR  
Bible Studies

### Sunday Morning Bible Study

*The Power of Jesus' Names*

Sunday mornings  
9:00 - 10:00 a.m.

[Zoom meeting info. on website](#)

In Person space is limited

Contact Don Stoehr through the [church office](#).

### Sunday School Classes K-5

Sunday morning  
9:30—10:30 am

[Sign up online for Sunday School](#)

[Lori Hakes,](#)

[Director of Children's Ministries](#)

### Sunday School Grades 6-12

Sunday morning  
9:30—10:30 am

[Nick Duclos,](#)

[Director of Student Ministry](#)

### Sunday Morning Bible Study

*Simon Peter*

*The Fiery Fisher of Men*

Sunday mornings  
10:45 a.m.-12:00 Noon

[Zoom meeting and sign up information on the church website](#)

Limited In Person space

Contact Stein Cass through the [church office](#).

## NEW BIBLE STUDY

*Colossians* by Living Way

Wed. 9:30 a.m. February 10 - Mar. 31

Come and discover the rich treasures found in Colossians.

This study reminds us that the moment we believe in Christ we have a share in 'the inheritance of the saints.'

To join contact Annette Wagenknecht through the [church office](#)

### Student Ministries

#### Youth Group

Sunday afternoons  
12:00 - 2:00 p.m.

[Nick Duclos,](#)

[Director of Student Ministry](#)

#### Confirmation Class

Sunday afternoons  
2:00 - 3:00 p.m.

[Nick Duclos,](#)

[Director of Student Ministry](#)

#### Young Adult Bible Study

Sunday afternoon  
3:00 — 5:00 p.m.

[Nick Duclos,](#)

[Director of Student Ministry](#)

### Women's Tuesday Bible Study

*Take Courage*

by Jennifer Rothschild  
thru February 2

*Tuesday Evenings*  
6:45 p.m.

[Zoom meeting info. on website](#)

In Person space is limited  
Contact Nancy Timm through the [church office](#) for information.

## NEW BIBLE STUDY

*Elijah* by Priscilla Shirer

Tues. 6:30 p.m. Feb. 16 - April 6

In this faith-building study, you'll discover how Elijah's obedience to God kept him anchored, sharpened his faith, broadened his impact, and invited heaven's fire to fall. God is also working in your life today to fashion a fiery, bold faith that will empower you to share the hope of Christ with your family, friends, co-workers, and community. To join contact Nancy Timm through the [church office](#)

### Women's Wednesday Bible Study

*John's Gospel* by Living Way

*Wednesday mornings*  
9:30-11:00 a.m.

[Zoom meeting info. on website](#)

Zoom online & limited In Person  
To join Contact: Annette Wagenknecht through the [church office](#).

### Men's Wednesday Bible Study

*John: The Word Became Flesh*

*Wednesday mornings*  
8:30—10:00 a.m.

Classes online through Zoom. For information contact Kevin Hischke through the [church office](#).

### Women's Thursday Bible Study

*Christianity, Cults & Religions*

*Thursday Mornings*  
9:30 - 11:00 a.m.

Zoom Online or Limited In-Person by Reservation Only.

To join Contact: Lynda Kluth through the [church office](#).

### Men's Friday Bible Study

*One Book at a Time*

*Friday Mornings 6:30 a.m.*

Men gather online to pray, read and discuss God's Word.

[Zoom meeting info. on website](#)

Contact Study Leader: Duane Highley  
303-514-6321

## NEW BIBLE STUDY

*Seamless* by Angie Smith

Thurs. 9:30 a.m. Feb. 18 - March 25

Understand the Bible as One Complete Story. Tie people, places and promises of the Bible together into the greater story of Scripture. Discover a biblical context that reshapes and brings to life stories from the Old and New Testaments. To join contact Lynda Kluth through the [church office](#)